



Aldreds
Estate Agents

71 Anson Road

, Great Yarmouth, NR31 0EY

Offers In Excess Of £150,000



3



1



2



E

71 Anson Road

, Great Yarmouth, NR31 0EY

Sitting in Southtown with a garden to rear, Aldreds are delighted to offer this well presented three bedroom mid terrace house. On the ground floor there are two reception rooms, kitchen, bathroom and WC. Electric heating with solar panels. Double glazing. Offered with no chain

Lounge

11'9" x 10'11" (3.6 x 3.34)

Door to front, double glazed window to front aspect, electric heater

Lobby

Stairs to landing

Dining Room

11'9" x 11'0" (3.6 x 3.36)

Under stair cupboard, double glazed window to rear aspect, electric heater

Kitchen

9'9" x 7'4" (2.98 x 2.25)

Double glazed window to side aspect, base & wall units with worktops, electric cooker point, plumbing for washing machine, sink with drainer, part tiled walls, electric heater

Rear Hallway

Door to garden

Bathroom

8'1" x 5'7" (2.47 x 1.72)

Shower in cubicle, hand basin, panel bath, opaque double glazed window to rear aspect, part tiled walls

WC

Low level WC, opaque double glazed window to side aspect

Landing

Bedroom 1

11'9" x 10'11" (3.6 x 3.34)

Loft access, storage cupboard, double glazed window to front aspect, electric heater





Bedroom 2

11'9" x 11'0" (3.6 x 3.36)

Double glazed window to rear aspect, door to

Bedroom 3

9'8" x 7'4" (2.95 x 2.25)

Double glazed window to side aspect

Outside

Front forecourt. Paved rear garden with electric points and timber shed

Tenure

Freehold

Services

Mains water, electricity, gas, drainage

Council Tax

Band A

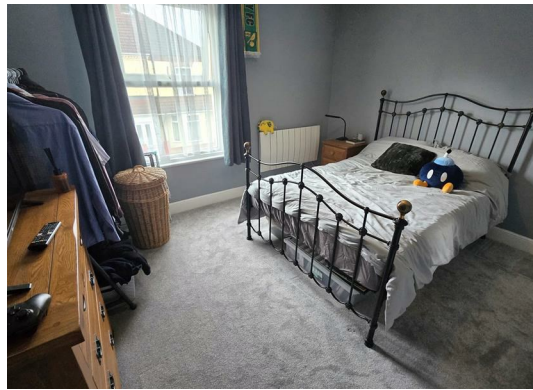
Location

Great Yarmouth is the largest resort on the East Norfolk coast with its Historic Market Place and varied selection of shops. The town has a busy port and the rivers Yare and Bure give access to the Norfolk Broads. There are Museums * Race Course * Greyhound Stadium * Schools for all ages * District Hospital approximately 5 miles south. Bus and rail services connect with Norwich.

Directions

From the Great Yarmouth office head west over Haven Bridge, turn left into Southtown Road, turn right in to Station Road, turn left into Anson Road

Ref Y12734/05/26



Floor Plan



Viewing

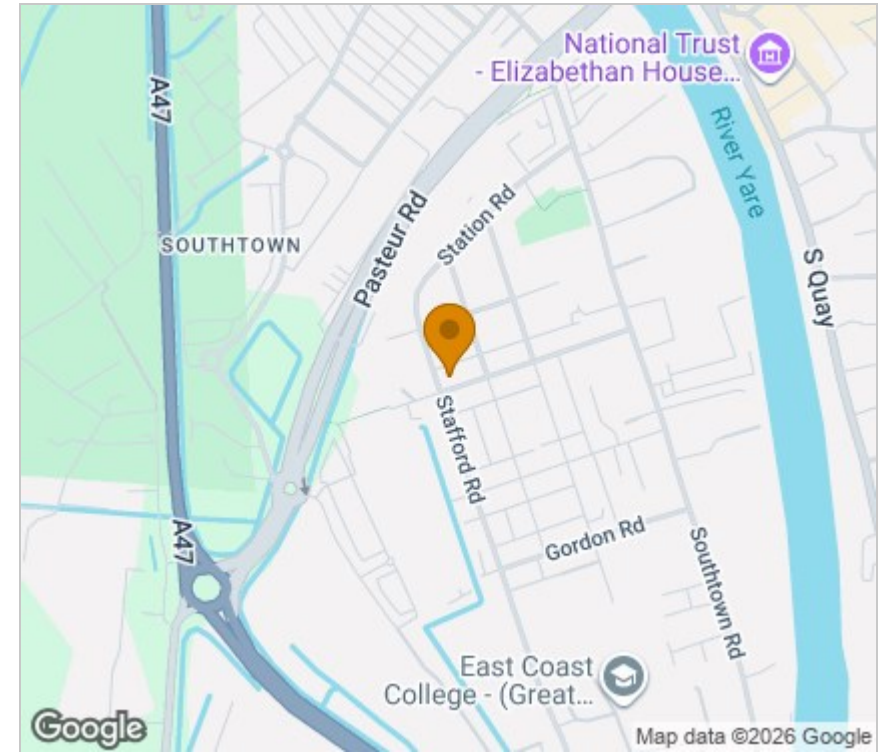
Please contact our Aldreds Great Yarmouth Office on 01493 844891 if you wish to arrange a viewing appointment for this property or require further information.

Disclaimer

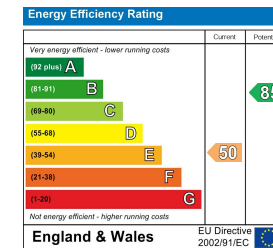
These particulars are issued on an understanding that all negotiations shall be conducted through Messrs. Aldreds. Please note: Messrs. Aldreds for themselves and for the vendors or lessors of this property whose agents they are given notice that: 1. Particulars are set out as a general outline only for guidance of intending purchasers or lessees, and do not constitute nor constitute part of, an offer or contract. 2. All descriptions, dimensions, references to condition and necessary permissions for use and occupation, and other details are given without responsibility and any intending purchasers or tenants should not rely on them as statements or representations of fact but must satisfy themselves by inspection or otherwise as to the correctness of each of them. 3. No person in the employment of Messrs. Aldreds has any authority to make or give any representation or warranty whatever in relation to this property. 4. If you are proposing to visit the property and are travelling some distance please check with Aldreds on the issue of availability prior to travelling. 5. Aldreds Property Consultants and associated services may offer additional services to the prospective purchaser for which they will be entitled to receive a commission.

Aldreds are pleased to be working with Mortgage Advice Bureau. They're an award-winning mortgage broker with over 1,400 advisers across the UK, and have access to over 12,000 mortgage products from over 90 lenders. Aldreds Estate Agents Ltd receive a commission of £200 on each completed case. Your home may be repossessed if you do not keep up repayments on your mortgage. There may be a fee for mortgage advice. The actual amount you pay will depend upon your circumstances. The fee is up to 1%, but a typical fee is 0.3% of the amount borrowed. Mortgage Advice Bureau is a trading name of Mortgage Seeker Limited which is an appointed representative of Mortgage Advice Bureau Limited and Mortgage Advice Bureau (Derby) Limited which are authorised and regulated by the Financial Conduct Authority. Mortgage Seeker Limited Registered Office: Lovewell Blake, Sixty Six North Quay, Great Yarmouth, Norfolk, NR30 1HE. Registered in England Number: 03721415. 6. Potential purchasers should check with their providers that the broadband and mobile phone coverage they would require is available.

Area Map



Energy Efficiency Graph



17 Hall Quay, Great Yarmouth, Norfolk, NR30 1HJ
Tel: 01493 844891 Email: yarmouth@aldreds.co.uk <https://www.aldreds.co.uk/>

Registered in England Reg. No. 08945751 Registered Office: 17 Hall Quay, Great Yarmouth, Norfolk NR30 1HJ
Directors: Mark Duffield B.S.c. FRICS. Dan Crawley MNAEA Paul Lambert MNAEA